

25/30/35DE-9V

STAGE V DIESEL FORKLIFT TRUCKS



Load Capacity
2500 – 3500 kg

Motor
2,4 L • 49,1 kW • 245 Nm

Lift Height
3000 – 6000 mm

VALUE-DRIVEN PERFORMANCE

The new Hyundai 25/30/35DE-9V Diesel Forklift Trucks

The 25/30/35DE-9V is an innovative forklift truck range engineered to combine performance, sustainability and cost-effectiveness. The reliable and highly acclaimed HD Hyundai Infracore (HDI) industrial engine provides powerful performance with low fuel consumption, fully complying with EU Stage V regulations. The forklift truck design is optimised for easy maintenance, excellent visibility, ergonomics and operational safety, all with a low Total Cost of Ownership (TCO).

Powerful HDI Engine

The 25/30/35DE-9V series is equipped with a robust and reliable HD Hyundai Infracore (HDI) industrial diesel engine. This powerful engine delivers high torque at low RPM. Fully compliant with Stage V emission standards, it ensures both low emissions and excellent fuel efficiency.

Heavy-duty performance

Built with a robust chassis, a heavy-duty transmission and a durable drive axle, these models deliver consistent power for any application. Operators can switch between Standard and Power engine modes for optimal efficiency and performance.

Low maintenance costs

The extended 1,000-hour service interval reduces maintenance costs and increases uptime – key drivers for improved operational efficiency and optimised fleet costs.

Premium convenience

Alongside an extensive range of standard equipment, these economical forklifts can be equipped with a selection of premium features to maximise operator comfort: panoramic TS masts, air conditioning, heating, heated seats, and full or partial cabins – designed for convenience in every environment.



PERFORMANCE UP

The 25/30/35DE-9V forklifts deliver outstanding performance with advanced transmission, robust drive axle, and smart engine modes. Powered by the HD Hyundai Infracore Stage V engine, they offer high torque at low rpm and excellent fuel efficiency—built for reliability and productivity in demanding applications.

Key features:



Robust and Reliable

Engineered for long-lasting performance.



Superior Durability

Timing gear system ensures longevity.



Advanced BOSCH Fuel System

German technology with common rail & ECU (DPF + DOC).



Easy Maintenance

Remote oil filter and simplified fuel line for quick servicing.



Maintenance-Free Valve Clearance

Hydraulic Lash Adjuster (HLA) system eliminates the need for valve clearance checks.



Powerful & reliable HD Hyundai Infracore (HDI) engine

Our own renowned and highly acclaimed HD Hyundai Infracore (HDI) industrial engine powers the 25/30/35DE-9V forklift trucks, ensuring exceptional performance and reliability.

This HDI DN02 engine is the ideal engine for applications requiring high torque at low rpm, while fully complying with EU Stage V emission regulations.

PERFORMANCE SPECIFICATIONS:

- Rated Power (kW/rpm): 49.1 / 2,300
- Max Torque (Nm/rpm): 245 / 1,600

Power shift for heavy duty work

Equipped with a high-capacity, single-speed clutch pack and a torque converter with outstanding torque conversion efficiency, this transmission is designed for heavy-duty operations. The direct and responsive control system ensures smooth and precise handling, enhancing overall operational efficiency.

Durable drive axle

The heavy-duty drive axle with wet brake discs is engineered for maximum reliability and durability, delivering strong braking performance in demanding applications while keeping maintenance costs low. Additionally, it comes standard with an automatic parking brake system for enhanced safety and convenience.

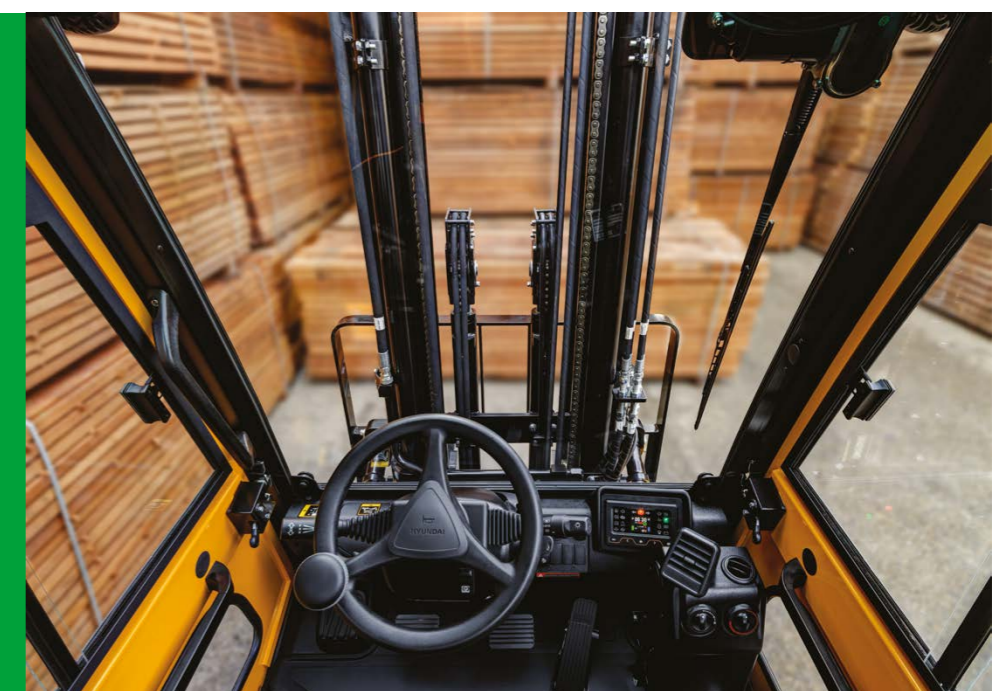
Standard and Power engine mode

Operators can easily switch between Standard (STD) and Power (PWR) mode using the STD/PWR button on the dashboard, adjusting engine performance to match their work environment. Additionally, selecting STD mode can reduce fuel costs by over 4% compared to PWR mode, enhancing efficiency without compromising performance.

Panoramic view **OPTION**

Traditional 3-stage masts can obstruct the operator's front view due to the centrally positioned free lift cylinder.

The 3-stage TS mast enhances frontal visibility by strategically placing the free lift cylinder on the left and right sides for safer and more efficient operation.



SAFETY UP

Working safely starts with the right technology. Our advanced systems and smart features are designed to protect operators, prevent accidents, and ensure reliable performance in every situation. From intuitive controls to automated safeguards, we help you work with confidence and peace of mind.



Red and blue lights

The Blue Spot projects a bright blue beam behind the forklift to alert pedestrians of approaching equipment. The Red Zone creates a visual safety boundary using red floor lighting, helping to keep people at a safe distance and reduce accident risk in busy work areas.

Seat belt interlock system

The seat belt interlock system prevents forklift operation if the operator is not wearing the seat belt or releases it while driving. This feature helps to prevent operator injury by ensuring the seat belt is always fastened during operation.



Speed limit control

The maximum driving speed can be set to reduce the risk of accidents caused by excessive speed. Even with the speed limit in place, the forklift maintains its optimal hill-climbing ability and mast performance for efficient operation.



Features for safer operation



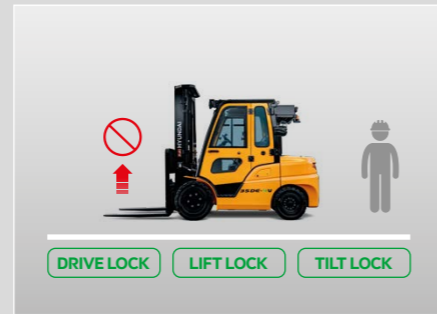
Automatic parking brake

The auto parking brake engages automatically when the engine stops or when the operator leaves the seat, preventing potential human errors. Additionally, operators can manually apply or release the parking brake while the engine is running using a dedicated button for added control and convenience.



Hill assist control

When the forklift stops on an incline, the automatic parking brake temporarily engages to prevent rollback, ensuring a smooth and controlled restart.



Operator Presence Sensing System (OPSS)

The OPSS automatically restricts driving, lifting, and tilting when the operator leaves the driver's seat, helping to prevent safety accidents and ensuring safe operation at all times.



Load weighing system OPTION

The load weight measurement system, integrated with a lift line pressure sensor and cluster program, provides real-time feedback on the weight of the lifted load. An overload warning, both audible and visual, can be activated on the cluster when the load exceeds set limits, helping prevent overload situations.



Startup restriction

To prevent unauthorised use, the forklift is equipped with a password protection system on the cluster, ensuring only authorised personnel can operate the truck. This feature helps prevent accidents and potential damage caused by unauthorised use. Up to ten passwords can be set for added security. This safety feature can be activated or deactivated as needed.



LED lights

LED lights are installed throughout the forklift to improve visibility and overall vision during operation. Durable front worklights and tail lights come as standard, while a rear worklight and beacon light can be supplied as options.

CONVENIENCE UP

Designed for convenience and ease, every detail enhances operator comfort and reduces fatigue. Smart ergonomics and intuitive controls ensure a smooth, efficient, and enjoyable driving experience in any environment.



Full-suspension seat

The Grammer full-suspension seat offers a cushion that can be adjusted to the driver's weight for optimal comfort, along with armrests for added support. An optional heater is available for enhanced comfort.

Hydraulic power steering system

The hydraulic power steering system, paired with a 70mm diameter reduced steering wheel, greatly reduces operator fatigue during extended working hours, ensuring a more comfortable and effortless driving experience.



Optimised ergonomic pedal layout

To improve ergonomics, the pedal layout has been redesigned with an automotive-style hanging pedal mechanism. This modification enhances control and reduces operator fatigue, contributing to a more comfortable and efficient driving experience.

Air conditioning / Heater OPTION

For a comfortable cabin environment, the forklift can be equipped with air conditioning, with 4 independent nozzles to adjust the cool airflow to the operator's preference.

The heater provides warm air to both the operator's upper and lower body, ensuring comfort in colder conditions.



Multi-functional digital colour cluster

A multi-functional digital colour cluster provides the operator with a clear and easy-to-read overview of the forklift's status. This cluster includes the vehicle control module and supports a range of additional features for enhanced operational efficiency.

Multiple cabin options

The DE-9V comes standard with an overhead guard, while full and partial cabins are available as options. The full cabin provides excellent visibility and easy-to-operate doors, ensuring a safe and comfortable driving experience. The partial cabin, equipped with a top cover plus front and rear windows with wipers, offers practical protection.



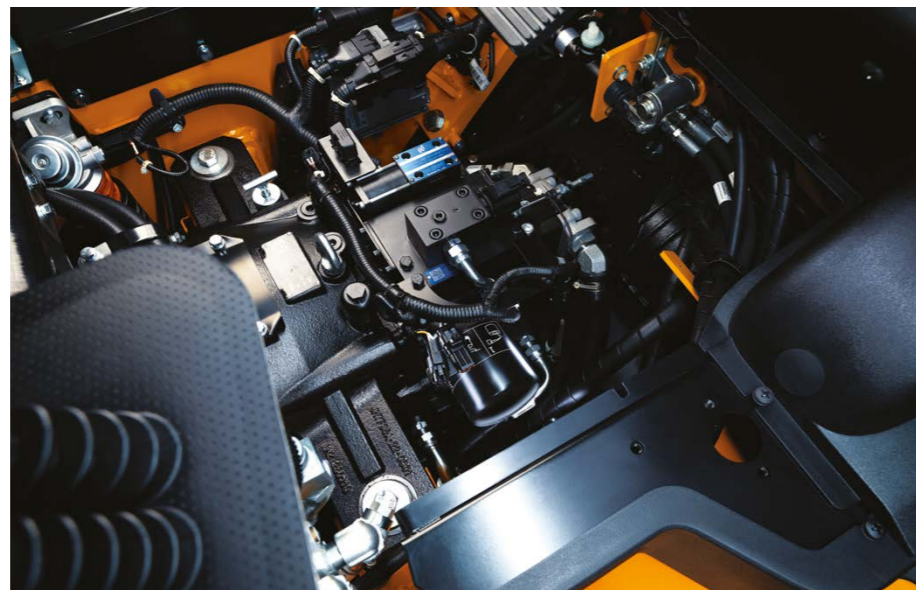
MAINTENANCE UP

Smart design makes servicing simple. Easy-access components and tool-less covers reduce downtime, while clear diagnostics help keep your forklift performing at its best.



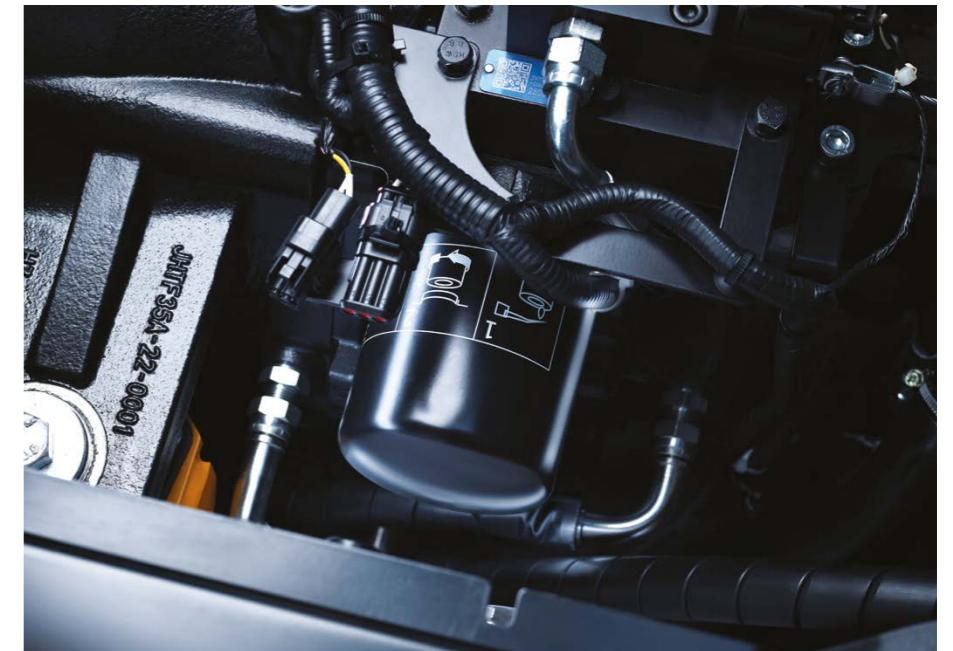
▶ Large workspace for easy access

The engine hood, supported by two gas springs, opens to create an additional large workspace. The toolless side covers and floor plate can be easily removed, providing easy maintenance accessibility for efficient servicing.



▶ Engine failure and maintenance warning

Engine failures are directly displayed on the cluster for immediate attention. The cluster also features a maintenance warning function, which alerts the operator based on the set replacement schedule for consumables. For detailed engine diagnostics, a special tool connected to a laptop is required.



▶ Transmission configuration

The transmission is designed for easy maintenance, with components such as the control valve and filter positioned at the upper part of the transmission for quick and convenient access, helping to reduce overall maintenance time.



▶ Fuse box & remote type engine oil filter

The fuses and relays are housed in a water and dustproof box, located behind the toolless side cover for easy access. The engine oil filter is strategically positioned on the upper side of the engine, minimising maintenance time and improving overall serviceability.

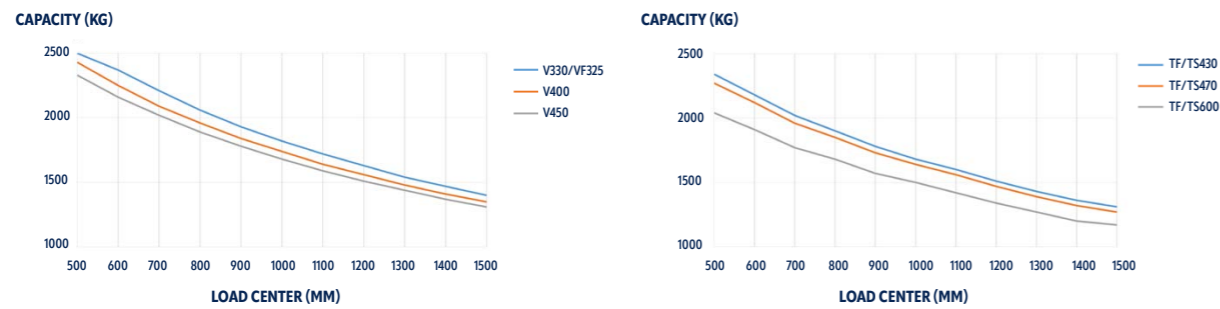
▶ Easy accessible exhaust aftertreatment system

The detachable cover inside the counterweight provides easy access to the exhaust aftertreatment system, reducing maintenance time. The DPF filter requires removal and cleaning every 5,000 hours to maintain optimal performance.

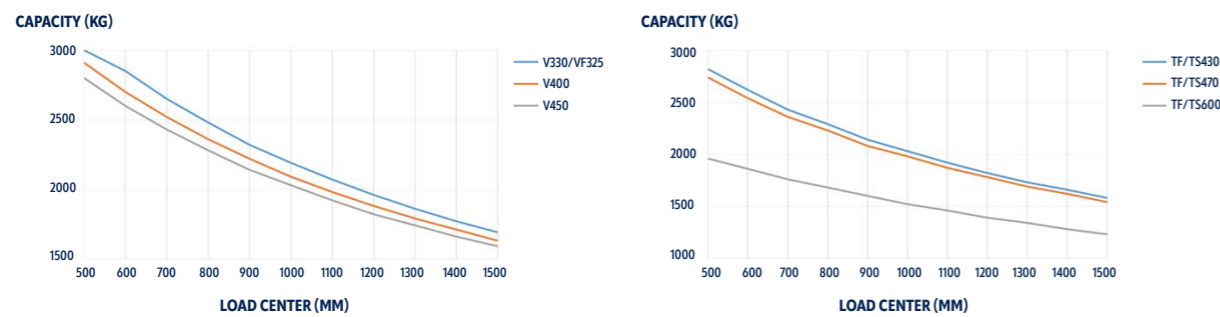


25/30/35DE-9V LOAD CAPACITY

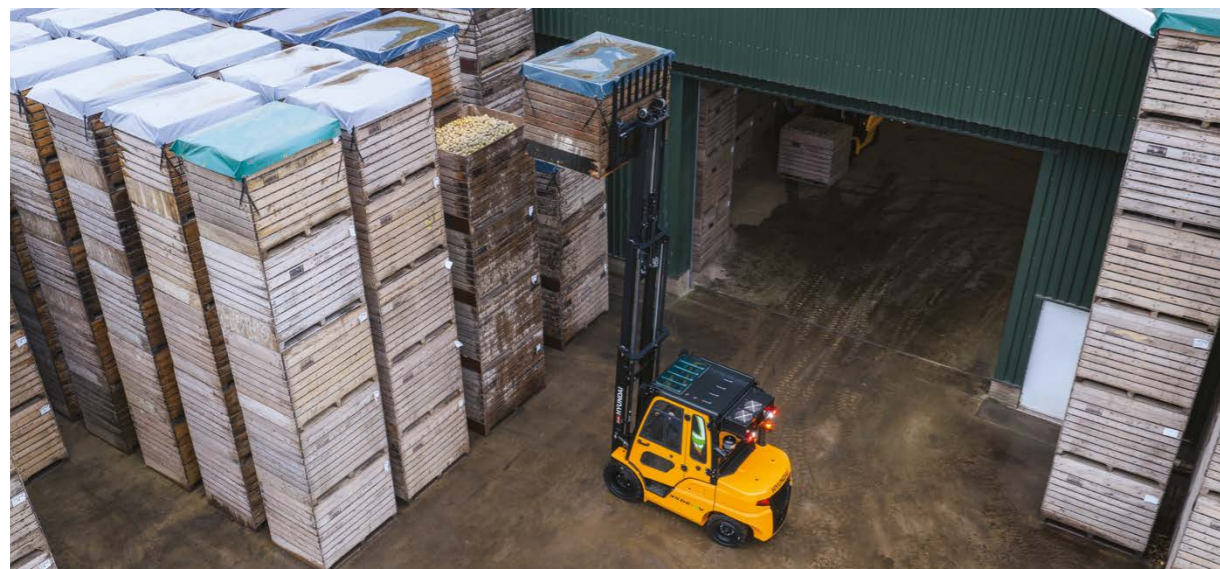
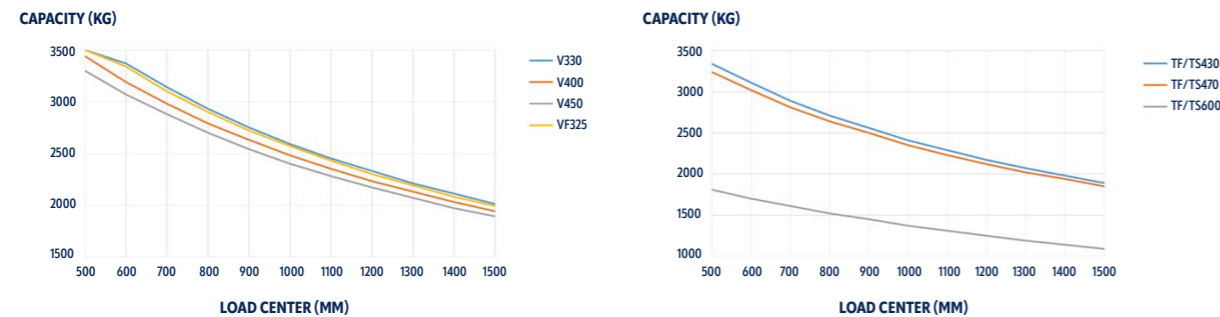
25DE-9V



30DE-9V



35DE-9V



25/30/35DE-9V MAST SPECIFICATION

TYPE SHEET FOR INDUSTRIAL TRUCK ACC. TO VDI 2198

MAST TYPE	MAX FORK HEIGHT h3 (mm)	MAX MAST HEIGHT With backrest h4 (mm)	LOWERED HEIGHT h1 (mm)	FREE LIFT HEIGHT With backrest h2 (mm)	TILT ANGLE Fwd / Bwd (°)	LOAD CAPACITY @ LC 500MM		TRUCK WEIGHT (UNLOADED) Standard configuration** Single tyre (kg)	
						No attachment (kg)	Integral side shift (kg)		
25DE-9V									
V-Duplex - no free lift	V300	3000	4180	2025	155	6° / 10°	2500	2500	3325
	V330	3300	4480	2175	155	6° / 10°	2500	2500	3344
	V400	4000	5180	2575	155	6° / 10°	2430	2430	3402
	V450	4500	5680	2875	155	6° / 6°	2330	2330	3463
	V500	5000	6180	3125	155	6° / 6°	2240	2240	3497
VF-Duplex - free lift - 1 central cylinder	VF295	2976	4156	2025	1377	6° / 6°	2500	2500	3325
	VF325	3276	4456	2175	1527	6° / 6°	2500	2500	3344
	VF345	3476	4656	2275	1627	6° / 6°	2500	2500	3357
TF-Triplex - free lift - 1 central cylinder	TF430	4300	5480	2025	1377	6° / 6°	2340	2340	3471
	TF450	4500	5680	2125	1477	6° / 6°	2300	2300	3488
	TF470	4700	5880	2175	1527	6° / 6°	2270	2270	3497
	TF500	5000	6180	2275	1627	6° / 6°	2220	2220	3515
	TF550	5500	6680	2475	1827	6° / 6°	2130	2130	3552
	TF600	6000	7180	2675	2027	6° / 6°	2040	2040	3632
TS-Triplex - free lift - 2 central cylinders	TS430	4300	5480	2025	1377	6° / 6°	2340	2340	3487
	TS450	4500	5680	2125	1477	6° / 6°	2300	2300	3503
	TS470	4700	5880	2175	1527	6° / 6°	2270	2270	3513
	TS500	5000	6180	2275	1627	6° / 6°	2220	2220	3532
	TS550	5500	6680	2475	1827	6° / 6°	2130	2130	3568
	TS600	6000	7180	2675	2027	6° / 6°	2040	2040	3649
30DE-9V									
V-Duplex - no free lift	V300	3000	4180	2040	155	6° / 10°	3000	3000	3767
	V330	3300	4480	2190	155	6° / 10°	3000	3000	3786
	V400	4000	5180	2590	155	6° / 10°	2910	2910	3844
	V450	4500	5680	2890	155	6° / 6°	2800	2800	3904
	V500	5000	6180	3140	155	6° / 6°	2690	2690	3939
VF-Duplex - free lift - 1 central cylinder	VF295	2976	4156	2040	1392	6° / 6°	3000	3000	3760
	VF325	3276	4456	2190	1542	6° / 6°	3000	3000	3779
	VF345	3476	4656	2290	1642	6° / 6°	3000	3000	3792
TF-Triplex - free lift - 1 central cylinder	TF430	4300	5480	2040	1392	6° / 6°	2820	2820	3906
	TF450	4500	5680	2140	1492	6° / 6°	2780	2780	3923
	TF470	4700	5880	2190	1542	6° / 6°	2740	2740	3932
	TF500	5000	6180	2290	1642	6° / 6°	2680	2680	3950
	TF550	5500	6680	2490	1842	6° / 6°	2580	2580	3987
	TF600	6000	7180	2690	2042	6° / 6°	1960	1960	4067
TS-Triplex - free lift - 2 central cylinders	TS430	4300	5480	2025	1377	6° / 6°	2820	2820	3938
	TS450	4500	5680	2125	1477	6° / 6°	2780	2780	3935
	TS470	4700	5880	2175	1527	6° / 6°	2740	2740	3945
	TS500	5000	6180	2275	1627	6° / 6°	2680	2680	3964
	TS550	5500	6680	2475	1827	6° / 6°	2580	2580	4000
	TS600	6000	7180	2675	2027	6° / 6°	1960	1960	4080
35DE-9V									
V-Duplex - no free lift	V300	3000	4180	2040	155	6° / 10°	3500	3500	4131
	V330	3300	4480	2190	155	6° / 10°	3500	3500	4150
	V400	4000	5180	2590	155	6° / 10°	3440	3440	4208
	V450	4500	5680	2890	155	6° / 6°	3300	3300	4268
	V500	5000	6180	3140	155	6° / 6°	3180	3180	4303
VF-Duplex - free lift - 1 central cylinder	VF295	2976	4156	2040	1392	6° / 6°	3500	3500	4124
	VF325	3276	4456	2190	1542	6° / 6°	3500	3500	4143
	VF345	3476	4656	2290	1642	6° / 6°	3500	3500	4156
TF-Triplex - free lift - 1 central cylinder	TF430	4300	5480	2040	1392	6° / 6°	3340	3340	4270
	TF450	4500	5680	2140	1492	6° / 6°	3290	3290	4287
	TF470	4700	5880	2190	1542	6° / 6°	3240	3240	4296
	TF500	5000	6180	2290	1642	6° / 6°	3170	3170	4314
	TF550	5500	6680	2490	1842	6° / 6°	2860	2860	4351
	TF600	6000	7180	2690	2042	6° / 6°	1810	1810	4431
TS-Triplex - free lift - 2 central cylinders	TS430	4300	5480	2025	1377	6° / 6°	3340	3340	4302
	TS450	4500	5680	2125	1477	6° / 6°	3290	3290	4299
	TS470	4700	5880	2175	1527	6° / 6°	3240	3240	4309
	TS500	5000	6180	2275	1627	6° / 6°	3170	3170	4328
	TS550	5500	6680	2475	1827	6° / 6°	2860	2860	4364
	TS600	6000	7180	2675	2027	6° / 6°	1810	1810	4444

** Standard configuration: No options, without attachment, forks only, without hydraulic piping

25/30/35DE-9V

STANDARD/OPTIONAL EQUIPMENT

DESCRIPTION		25DE-9V /30DE-9V / 35DE-9V	
MAST & ATTACHMENT	MAST	V-Duplex - no free lift 3000 ~ 5000mm	<input type="checkbox"/>
		VF-Duplex - free lift - 1 central cylinder 2976 ~ 3476mm	<input type="checkbox"/>
		TF-Triplex - free lift - 1 central cylinder 4300 ~ 6000mm	<input type="checkbox"/>
		TS-Triplex - free lift - 2 central cylinders 4300 ~ 6000mm	<input type="checkbox"/>
		Attachment piping for 3, 4 spool	<input type="checkbox"/>
	CARRIAGE / ATTACHMENT	Hook on type	<input checked="" type="checkbox"/>
		Integral side shift	<input type="checkbox"/>
		Integral side shift + fork positioner	<input type="checkbox"/>
		Side shift (hook on type)	<input type="checkbox"/>
		Backrest	<input checked="" type="checkbox"/>
FORKS	Standard: 1050 mm	<input checked="" type="checkbox"/>	
	Other fork lengths: 900 mm ~1800 mm	<input type="checkbox"/>	
HYDRAULICS	MCV	3 Spool MCV	<input checked="" type="checkbox"/>
		2 or 4 Spool MCV	<input type="checkbox"/>
	FORK	Manual	<input checked="" type="checkbox"/>
OIL	HYD oil - VG 32	<input checked="" type="checkbox"/>	
	HYD oil - VG 15 or VG 68	<input type="checkbox"/>	
OPERATION	OHG / CABIN	Overhead guard	<input checked="" type="checkbox"/>
		Full cabin (Split doors)	<input type="checkbox"/>
		Partial cabin - top cover & front & rear window, including wipers	<input type="checkbox"/>
		Top cover	<input type="checkbox"/>
		Air conditioning	<input type="checkbox"/>
	CLIMATE	Heater	<input type="checkbox"/>
		Grammer vinyl	<input checked="" type="checkbox"/>
	SEAT	Orange seat belt	<input checked="" type="checkbox"/>
		Armrest L, R	<input checked="" type="checkbox"/>
		Heated	<input type="checkbox"/>
VISIBILITY	MIRROR	Panorama mirror	<input checked="" type="checkbox"/>
		Side mirror LH/RH	<input type="checkbox"/>
	LIGHTS	Front worklight (LED)	<input checked="" type="checkbox"/>
		Taillights	<input checked="" type="checkbox"/>
		Rear worklight (LED)	<input type="checkbox"/>
		Orange beacon light (LED)	<input type="checkbox"/>
		Bluespot	<input type="checkbox"/>
		Redzone	<input type="checkbox"/>
		Hazard lights	<input type="checkbox"/>
CONVENIENCE	Forward / Reverse switch on steering column	<input checked="" type="checkbox"/>	
	Battery master switch	<input type="checkbox"/>	
	Auto tilt	<input type="checkbox"/>	
	Load indicator	<input type="checkbox"/>	
	Rear grip with horn button	<input type="checkbox"/>	
SAFETY	Backup alarm	<input checked="" type="checkbox"/>	
	Rear camera (separate monitor)	<input type="checkbox"/>	
	Fork camera (separate monitor)	<input type="checkbox"/>	
TYRES	Pneumatic	<input checked="" type="checkbox"/>	
	Solid	<input type="checkbox"/>	
	Non-marking	<input type="checkbox"/>	
OTHERS	Pre-air cleaner	<input type="checkbox"/>	

● Standard □ Optional





HYUNDAI
35DE-9V

HYUNDAI

HYUNDAI

25DE-9V

HYUNDAI

In Europe, Hyundai Material Handling (HD Hyundai XiteSolution) is operated and managed by:

HD Construction Equipment Hyundai Europe nv, Hyundailaan 4,
3980 Tessenderlo-Ham, Belgium

T +3214 56 22 00 E info@hyundai.eu www.hyundai-mh.eu VAT BE0454495082

The information and data contained in this brochure is the property of HD Hyundai XiteSolution and has been compiled with the utmost care. Specifications and designs are subject to change at any time without notice. As general data, images and descriptions have been used in the brochure, Hyundai products may be fitted with non-standard equipment. The publication of this brochure cannot be regarded as an offer or proposal to contract and is intended for European markets only.



Scan to find out more
about this product.

Contact your Hyundai Material Handling dealer:
hyundai-mh.eu/en/dealer-locator

HY-MH-00119. 03/2026. EN. ISSUE 1