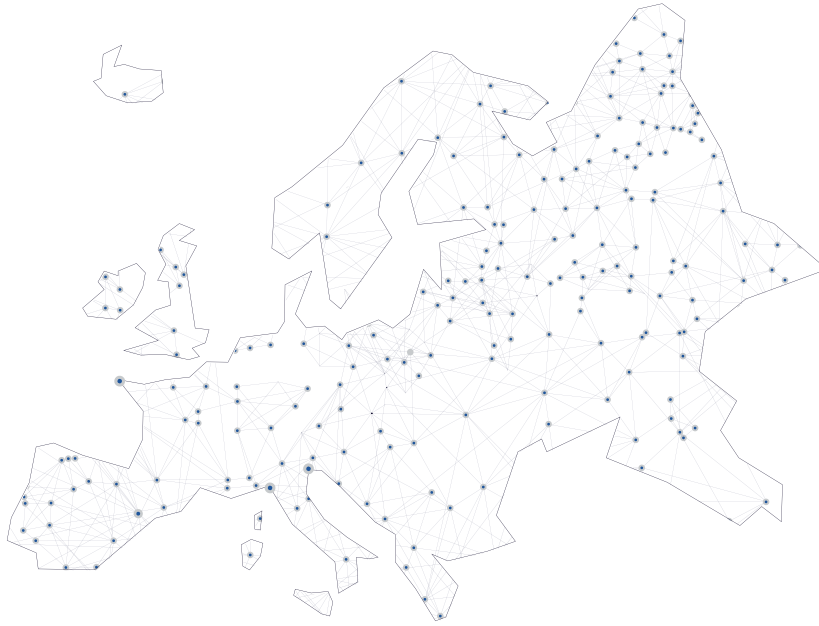
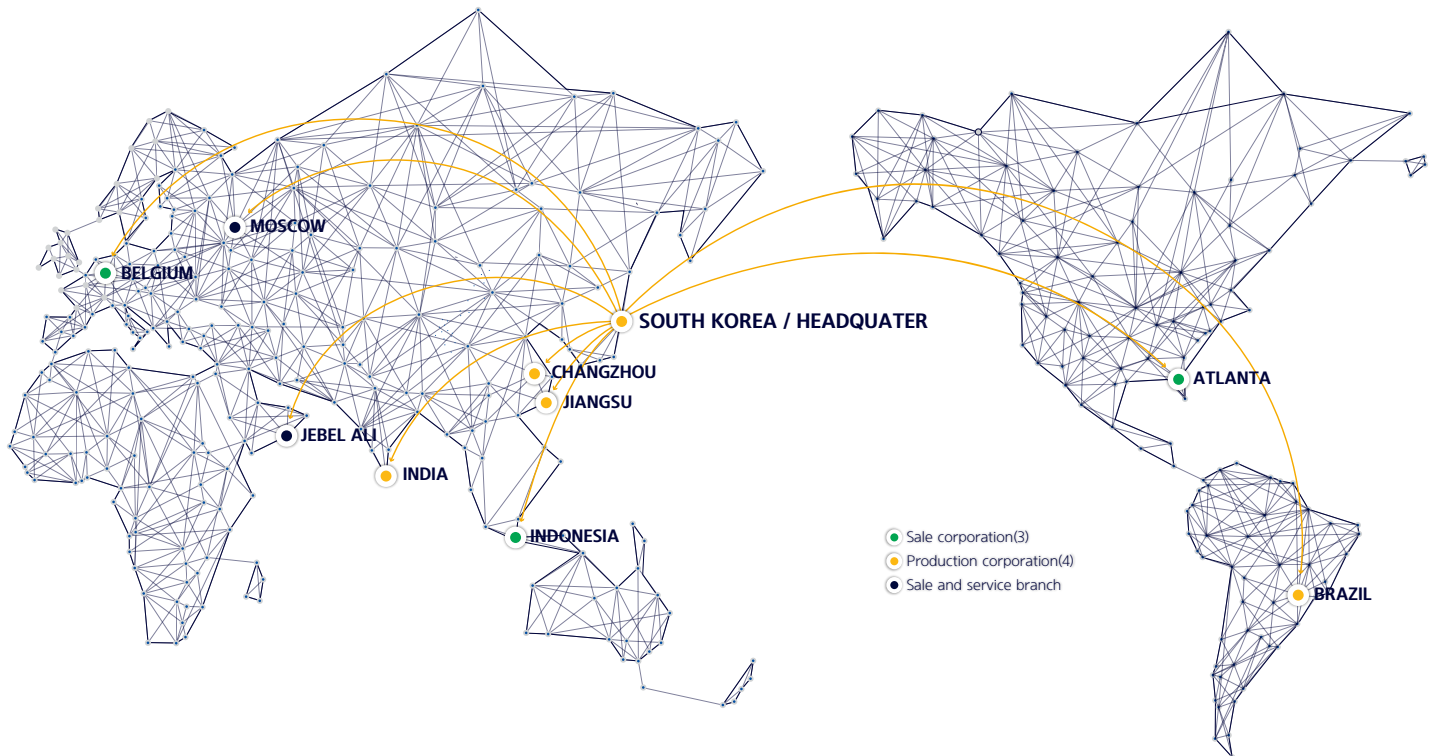


➤ EUROPE DEALER NETWORK



➤ HYUNDAI CONSTRUCTION EQUIPMENT GLOBAL NETWORK



BELGIUM



ATLANTA



JIANGSU



INDIA



BRAZIL



TECHINICAL SPECIFICATION

35/40/45D
50DN-9VB

**PACKED WITH
SMARTNESS**

STAGE



Internal Combustion Diesel Engine Forklift Truck

SPECIFICATIONS

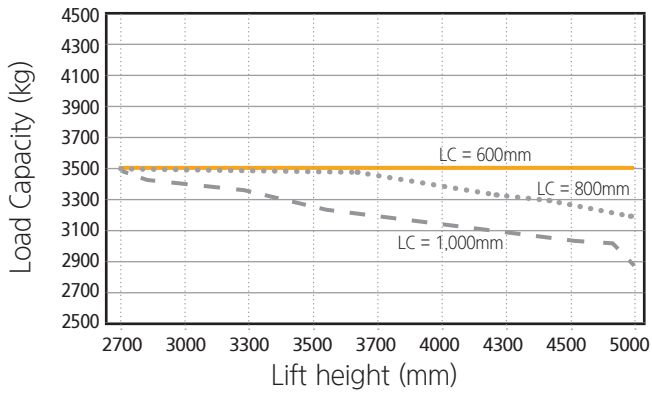
Distinguishing marks	1.1	Manufacturer			Hyundai	Hyundai	Hyundai	Hyundai		
	1.2	Manufacturer's Model Designation			35D-9VB	40D-9VB	45D-9VB	50DN-9VB		
	1.3	Drive			Diesel	Diesel	Diesel	Diesel		
	1.4	Type Of Operation			Seated	Seated	Seated	Seated		
	1.5	Load Capacity	C	kg	3,500	4,000	4,500	4,990		
	1.6	Load Center Distance	x	mm	600	600	600	600		
	1.8	Load Distance(Center of Drive Axle to Fork)	y	mm	561	561	561	576		
	1.9	Wheelbase		mm	2,030	2,030	2,100	2,100		
	Weights	2.1	Service Weight			kg	5,851	6,405	6,860	7,264
2.2		Axle Loading, Loaded	Front/Rear		kg	8,202 / 1,149	9,109 / 1,296	9,906 / 1,454	1,0749 / 1,515	
2.3		Axle Loading, Unloaded	Front/Rear		kg	2,700 / 3,151	2,822 / 3,584	2,919 / 3,942	2,949 / 4,315	
Tires/Chassis	3.1	Tires				Pneumatic	Pneumatic	Pneumatic	Pneumatic	
	3.2	Tire Size	Front			8.25-15-14PR	7.50-16-12PR	7.50-16-12PR	7.50-16-12PR	
	3.3	Tire Size	Rear			7.00-12-14PR	7.00-12-14PR	7.00-12-14PR	7.00-12-14PR	
	3.5	Number of Wheels (x = Driven Wheels)	Front/Rear			2x2	2x2	2x2	2x2	
	3.6	Tread	Front		mm	1,132	1,282	1,282	1,282	
	3.7	Tread	Rear		mm	1,140	1,140	1,140	1,140	
	Dimensions	4.1	Tilt of Mast/Fork Carriage Forward/Backward		α / β	degree	8/10	8/10	8/10	8/10
4.2		Height, Mast Lowered		h1	mm	2,235	2,220	2,220	2,220	
4.3		Free Lift		h2	mm	120	120	120	120	
4.4		Lift Height		h3	mm	3,020	3,020	3,020	2,930	
4.5		Height, Mast Extended		h4	mm	4,234	4,234	4,234	4,147	
4.7		Height of	Overhead Guard		h5	mm	2,350	2,340	2,340	2,340
			Cabin				2,360	2,350	2,350	2,350
4.8		Seat Height / Stand Height Rel. to SIP		h7	mm	1,316	1,304	1,304	1,304	
4.12		Coupling Height		h10	mm	372	372	360	360	
4.19		Overall Length		l1	mm	4,219	4,284	4,504	4,547	
4.20		Length to Face of Forks		l2	mm	3,149	3,204	3,284	3,347	
4.21		Overall Width (Double tire)		b1	mm	1,370 (1,746)	1,418 (1,746)	1,418 (1,746)	1,418 (1,746)	
4.22		Fork Dimensions		l x e x s	mm	50x122x1070	50x150x1070	50x150x1220	60x150x1200	
4.23		Fork Carriage Iso 2328, Class / Type A, B				III / A	III / A	III / A	III / A	
4.24		Fork-Carriage Width (Double tire)		b3	mm	1,300 (1,600)	1,300 (1,600)	1,300 (1,600)	1,300 (1,600)	
4.31		Ground Clearance, Below Mast, Loaded		m1	mm	170	155	155	155	
4.32		Ground Clearance, Center of Wheelbase		m2	mm	202	202	190	190	
4.34.1		Aisle Width For Pallets 1000 X 1200 Crossways		Ast	mm	4,656	4,705	4,799	4,857	
4.34.2		Aisle Width For Pallets 800 X 1200 Lengthways		Ast	mm	4,856	4,905	4,999	5,057	
4.35		Turning Radius		Wa	mm	2,895	2,944	3,038	3,081	
4.36		Smallest Pivot Point Distance			mm	1,023	1,023	1,074	1,074	
Performance data	5.1	Travel Speed	Loaded / Unloaded		km/h	26.8/29.2	26.5/28.4	26.1/28.2	25.8/28.1	
	5.2	Lift Speed	Loaded / Unloaded		mm/s	520/540	510/540	510/540	410/460	
	5.3	Lowering Speed	Loaded / Unloaded		mm/s	550/550	550/550	550/550	500/550	
	5.6	Max. Drawbar Pull	Loaded / Unloaded		N	41,432/39,409	41,382/40,430	41,405/40,346	41,460/40,256	
	5.8	Max. Gradeability	Loaded / Unloaded		%	44.5/25.1	39.2/24.1	35.4/23.4	32.6/22.3	
	5.10	Service Brake				Hydraulic	Hydraulic	Hydraulic	Hydraulic	
Engine	7.1	Engine Manufacturer / Type				HMC D4CC	HMC D4CC	HMC D4CC	HMC D4CC	
	7.2	Engine Power Acc. to Iso 1585			kW/rpm (hp/rpm)	54.4/2,200 (73.2/2,200)	54.4/2,200 (73.2/2,200)	54.4/2,200 (73.2/2,200)	54.4/2,200 (73.2/2,200)	
	7.3	Maximum Torque			kgf · m/rpm	34.5/1,500	34.5/1,500	34.5/1,500	34.5/1,500 (248/1,500)	
	7.4	No. of Cylinders / Displacement			EA/cc	4/2,891	4/2,891	4/2,891	4/2,891	
	7.5	Fuel Consumption Acc. to Vdi Cycle			l/h	3.5	3.8	4.0	4.4	
Additional data	8.1	Type of Drive Control			AC	Power Shift	Power Shift	Power Shift	Power Shift	
	8.2	Operating Pressure, System / Attachments			bar	210/140	210/140	210/140	210/140	
	8.3	Oil Volume For Attachments			LPM (GPM-US)	60	60	60	60	
	8.5	Trailer Coupling, Type Din				PIN	PIN	PIN	PIN	

* The above specifications are based on V300 mast.

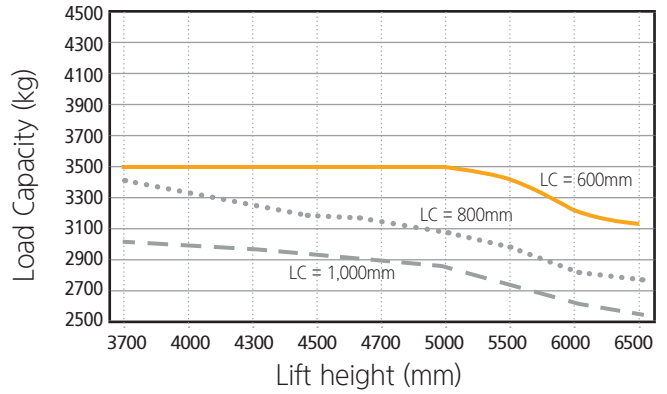
* In accordance with guideline 2198, this specification sheet provides details of the standard truck only. Non-standard tires, different masts, optional equipment, etc. may result in different values.

35D-9VB

2 stage mast

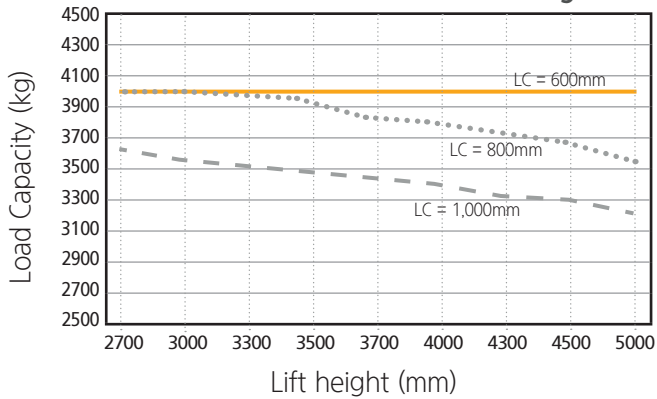


3 stage mast

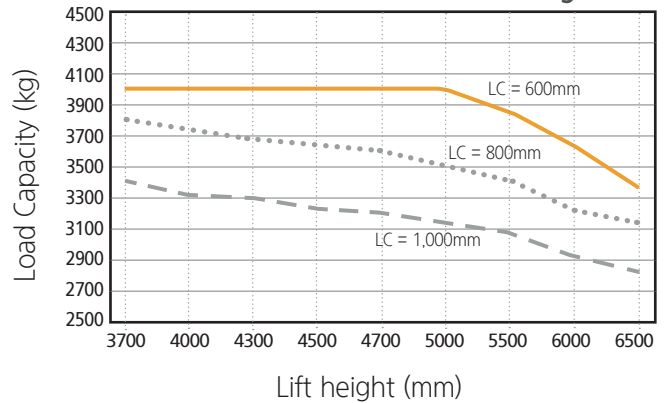


40D-9VB

2 stage mast

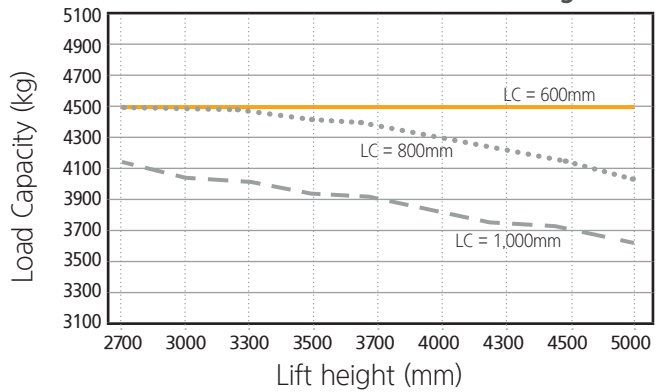


3 stage mast

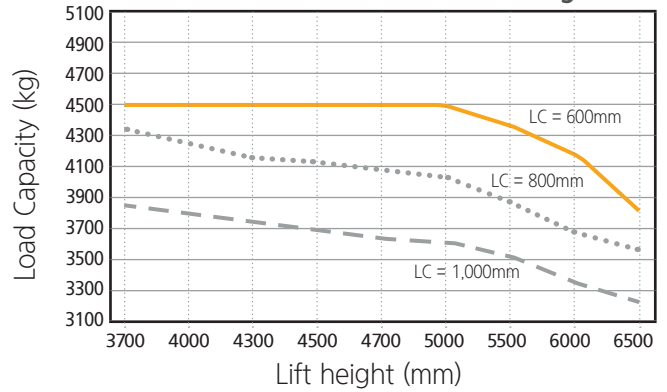


45D-9VB

2 stage mast

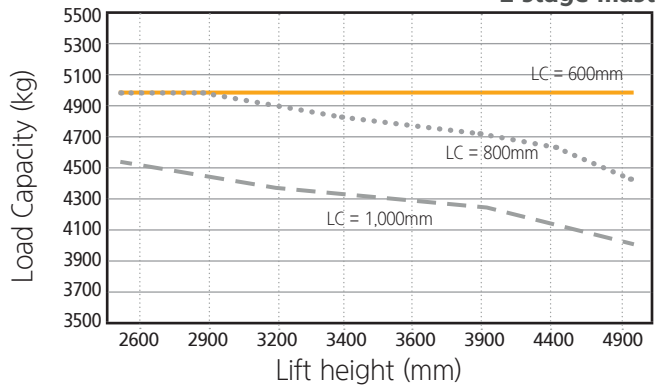


3 stage mast

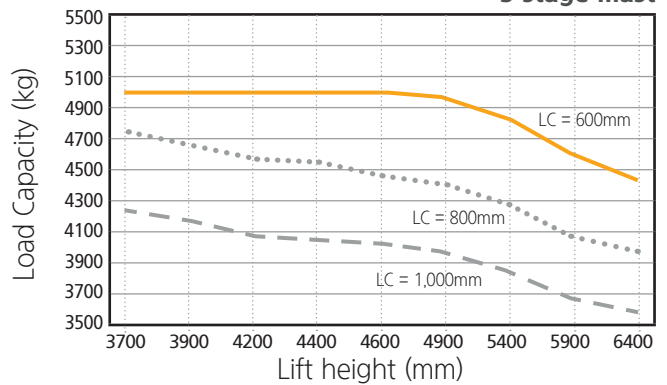


50Dn-9VB

2 stage mast



3 stage mast



* The above specifications are based on standard carriage and forks

MAST SPECIFICATION

35D-9VB	Mast Type	Maximum Fork Height	Overall Height (Lowered)		Free Lift Height		Mast Tilt		Load capacity without Sideshift		Load capacity with hook-on Sideshift		Truck Weight (Unloaded)	
			Single Tire	Double Tire	Single Tire	Double Tire	Fwd	Bwd	Single Tire	Double Tire	Single Tire	Double Tire	Single Tire	Double Tire
									600mm LC	600mm LC	600mm LC	600mm LC		
			mm	mm	mm	mm	mm	mm	deg	deg	kg	kg	kg	kg
2 Stage Limited Free Lift	V270	2,720	2,085	2,070	120	120	8	10	3,500	3,500	3,500	3,500	5,818	5,971
	V300	3,020	2,235	2,220	120	120	8	10	3,500	3,500	3,500	3,500	5,851	6,003
	V330	3,320	2,385	2,370	120	120	8	10	3,500	3,500	3,500	3,500	5,886	6,039
	V350	3,520	2,535	2,520	120	120	8	10	3,500	3,500	3,500	3,500	5,909	6,062
	V370	3,720	2,635	2,620	120	120	8	10	3,500	3,500	3,500	3,500	5,928	6,082
	V400	4,020	2,845	2,830	120	120	8	10	3,500	3,500	3,500	3,500	5,971	6,124
	V430	4,320	2,995	2,980	120	120	8	10	3,500	3,500	3,500	3,500	6,031	6,157
	V450	4,520	3,095	3,080	120	120	8	6	3,500	3,500	3,470	3,500	6,084	6,237
	V500	5,020	3,345	3,330	120	120	8	6	3,500	3,500	3,350	3,420	6,135	6,288
2 Stage Full Free Lift	VF280	2,805	2,135	2,120	931	1,258	8	8	3,500	3,500	3,500	3,500	5,859	6,009
	VF300	3,005	2,235	2,220	1,031	1,358	8	8	3,500	3,500	3,500	3,500	5,885	6,035
	VF315	3,155	2,325	2,310	1,121	1,448	8	8	3,500	3,500	3,500	3,500	5,904	6,055
3 Stage Full Free Lift	TF/TS370	3,730	2,035	2,020	822	1,149	8	8	3,500	3,500	3,500	3,500	6,075	6,228
	TF/TS400	4,030	2,135	2,120	922	1,249	8	8	3,500	3,500	3,500	3,500	6,105	6,258
	TF/TS430	4,330	2,235	2,220	1,022	1,349	8	8	3,500	3,500	3,470	3,500	6,136	6,289
	TF/TS450	4,510	2,295	2,280	1,082	1,409	8	8	3,500	3,500	3,430	3,490	6,155	6,308
	TF/TS470	4,720	2,385	2,370	1,172	1,499	8	8	3,500	3,500	3,380	3,440	6,191	6,344
	TF/TS500	5,020	2,485	2,470	1,272	1,599	8	6	3,500	3,500	3,310	3,380	6,214	6,367
	TF/TS550	5,520	2,665	2,650	1,452	1,779	8	6	3,430	3,500	3,200	3,270	6,275	6,428
	TF/TS600	6,030	2,845	2,830	1,632	1,959	8	6	3,230	3,320	3,010	3,070	6,344	6,497
	TF/TS650	6,540	3,025	3,010	1,812	2,139	8	6	3,110	3,170	2,900	2,930	6,385	6,538

40D-9VB	Mast Type	Maximum Fork Height	Overall Height (Lowered)		Free Lift Height		Mast Tilt		Load capacity without Sideshift		Load capacity with hook-on Sideshift		Truck Weight (Unloaded)	
			Single Tire	Double Tire	Single Tire	Double Tire	Fwd	Bwd	Single Tire	Double Tire	Single Tire	Double Tire	Single Tire	Double Tire
									600mm LC	600mm LC	600mm LC	600mm LC		
			mm	mm	mm	mm	mm	mm	deg	deg	kg	kg	kg	kg
2 Stage Limited Free Lift	V270	2,720	2,085	2,070	120	120	8	10	4,000	4,000	4,000	4,000	6,250	6,378
	V300	3,020	2,235	2,220	120	120	8	10	4,000	4,000	4,000	4,000	6,286	6,405
	V330	3,320	2,385	2,370	120	120	8	10	4,000	4,000	4,000	4,000	6,295	6,415
	V350	3,520	2,535	2,520	120	120	8	10	4,000	4,000	4,000	4,000	6,311	6,427
	V370	3,720	2,635	2,620	120	120	8	10	4,000	4,000	4,000	4,000	6,327	6,447
	V400	4,020	2,845	2,830	120	120	8	10	4,000	4,000	4,000	4,000	6,370	6,490
	V430	4,320	2,995	2,980	120	120	8	10	4,000	4,000	3,980	3,980	6,410	6,540
	V450	4,520	3,095	3,080	120	120	8	6	4,000	4,000	3,910	3,920	6,482	6,602
	V500	5,020	3,345	3,330	120	120	8	6	4,000	4,000	3,790	3,790	6,533	6,653
2 Stage Full Free Lift	VF280	2,805	2,135	2,120	916	1,243	8	8	4,000	4,000	4,000	4,000	6,222	6,374
	VF300	3,005	2,235	2,220	1,016	1,343	8	8	4,000	4,000	4,000	4,000	6,248	6,400
	VF315	3,155	2,325	2,310	1,106	1,433	8	8	4,000	4,000	4,000	4,000	6,267	6,419
3 Stage Full Free Lift	TF/TS370	3,730	2,035	2,020	807	1,134	8	8	4,000	4,000	4,000	4,000	6,473	6,593
	TF/TS400	4,030	2,135	2,120	907	1,234	8	8	4,000	4,000	3,990	4,000	6,503	6,623
	TF/TS430	4,330	2,235	2,220	1,007	1,334	8	8	4,000	4,000	3,910	3,920	6,534	6,654
	TF/TS450	4,510	2,295	2,280	1,067	1,394	8	8	4,000	4,000	3,870	3,870	6,553	6,673
	TF/TS470	4,720	2,385	2,370	1,157	1,484	8	8	4,000	4,000	3,810	3,820	6,589	6,709
	TF/TS500	5,020	2,485	2,470	1,257	1,584	8	6	4,000	4,000	3,740	3,750	6,612	6,732
	TF/TS550	5,520	2,665	2,650	1,437	1,764	8	6	3,870	3,900	3,620	3,630	6,673	6,794
	TF/TS600	6,030	2,845	2,830	1,617	1,944	8	6	3,650	3,670	3,410	3,410	6,742	6,862
	TF/TS650	6,540	3,025	3,010	1,797	2,124	8	6	3,310	3,530	3,290	3,280	6,783	6,904

Mast Type		Maximum Fork Height	Overall Height (Lowered)		Free Lift Height		Mast Tilt		Load capacity without Sideshift		Load capacity with hook-on Sideshift		Truck Weight (Unloaded)	
			Single Tire	Double Tire	Single Tire	Double Tire	Fwd	Bwd	Single Tire	Double Tire	Single Tire	Double Tire	Single Tire	Double Tire
									600mm LC	600mm LC	600mm LC	600mm LC		
			mm	mm	mm	mm	mm	deg	deg	kg	kg	kg	kg	kg
2 Stage Limited Free Lift	V270	2,720	2,085	2,070	120	120	8	10	4,500	4,500	4,500	4,500	6,715	6,831
	V300	3,020	2,235	2,220	120	120	8	10	4,500	4,500	4,500	4,500	6,734	6,860
	V330	3,320	2,385	2,370	120	120	8	10	4,500	4,500	4,500	4,500	6,741	6,890
	V350	3,520	2,535	2,520	120	120	8	10	4,500	4,500	4,500	4,500	6,756	6,913
	V370	3,720	2,635	2,620	120	120	8	10	4,500	4,500	4,500	4,400	6,766	6,933
	V400	4,020	2,845	2,830	120	120	8	10	4,500	4,500	4,500	4,500	6,798	6,975
	V430	4,320	2,945	2,980	120	120	8	10	4,500	4,500	4,500	4,500	6,848	7,008
	V450	4,520	3,095	3,080	120	120	8	6	4,500	4,500	4,440	4,480	6,911	7,088
	V500	5,020	3,345	3,330	120	120	8	6	4,500	4,500	4,300	4,340	6,962	7,139
2 Stage Full Free Lift	VF280	2,805	2,135	2,120	853	1,442	8	8	4,500	4,500	4,500	4,500	6,681	6,858
	VF300	3,005	2,235	2,220	953	1,542	8	8	4,500	4,500	4,500	4,500	6,707	6,884
	VF315	3,155	2,325	2,310	1,043	1,602	8	8	4,500	4,500	4,500	4,500	6,726	6,903
3 Stage Full Free Lift	TF/TS370	3,730	2,035	2,020	796	1,114	8	8	4,500	4,500	4,500	4,500	6,902	7,081
	TF/TS400	4,030	2,135	2,120	896	1,214	8	8	4,500	4,500	4,500	4,500	6,932	7,111
	TF/TS430	4,330	2,235	2,220	996	1,314	8	8	4,500	4,500	4,440	4,480	6,963	7,142
	TF/TS450	4,510	2,295	2,280	1,056	1,374	8	8	4,500	4,500	4,390	4,430	6,982	7,161
	TF/TS470	4,720	2,385	2,370	1,145	1,484	8	8	4,500	4,500	4,320	4,370	7,018	7,198
	TF/TS500	5,020	2,485	2,470	1,246	1,564	8	6	4,500	4,500	4,250	4,290	7,041	7,221
	TF/TS550	5,520	2,665	2,650	1,426	1,744	8	6	4,380	4,440	4,110	4,150	7,103	7,282
	TF/TS600	6,030	2,845	2,830	1,606	1,924	8	6	4,130	4,190	3,880	3,910	7,171	7,350
	TF/TS650	6,540	3,025	3,010	1,786	2,104	8	6	3,860	4,040	3,740	3,770	7,213	7,392

Mast Type		Maximum Fork Height	Overall Height (Lowered)		Free Lift Height		Mast Tilt		Load capacity without Sideshift		Load capacity with hook-on Sideshift		Truck Weight (Unloaded)	
			Single Tire	Double Tire	Single Tire	Double Tire	Fwd	Bwd	Single Tire	Double Tire	Single Tire	Double Tire	Single Tire	Double Tire
									600mm LC	600mm LC	600mm LC	600mm LC		
			mm	mm	mm	mm	mm	deg	deg	kg	kg	kg	kg	kg
2 Stage Limited Free Lift	V260	2,630	2,085	2,070	120	120	8	10	4,990	4,990	4,990	4,990	7,125	7,246
	V290	2,930	2,235	2,220	120	120	8	10	4,990	4,990	4,990	4,990	7,140	7,264
	V320	3,230	2,385	2,370	120	120	8	10	4,990	4,990	4,990	4,990	7,151	7,281
	V340	3,430	2,535	2,520	120	120	8	10	4,990	4,990	4,990	4,990	7,162	7,295
	V360	3,630	2,635	2,620	120	120	8	10	4,990	4,990	4,990	4,990	7,178	7,312
	V390	3,930	2,845	2,830	120	120	8	10	4,990	4,990	4,990	4,990	7,214	7,347
	V440	4,430	3,095	3,080	120	120	8	6	4,990	4,990	4,870	4,950	7,317	7,451
	V490	4,930	3,345	3,330	120	120	8	6	4,990	4,990	4,730	4,810	7,359	7,493
2 Stage Full Free Lift	VF270	2,702	2,135	2,120	905	1,223	8	8	4,990	4,990	4,990	4,990	7,146	7,276
	VF290	2,902	2,235	2,220	1,005	1,323	8	8	4,990	4,990	4,990	4,990	7,171	7,301
	VF305	3,052	2,325	2,310	1,095	1,413	8	8	4,990	4,990	4,990	4,990	7,189	7,319
3 Stage Full Free Lift	TF/TS360	3,672	2,035	2,020	807	1,074	8	8	4,990	4,990	4,990	4,990	7,330	7,452
	TF/TS390	3,972	2,135	2,120	907	1,174	8	8	4,990	4,990	4,950	4,990	7,356	7,478
	TF/TS420	4,272	2,235	2,220	1,007	1,274	8	8	4,990	4,990	4,850	4,930	7,381	7,503
	TF/TS440	4,452	2,295	2,280	1,067	1,334	8	8	4,990	4,990	4,810	4,890	7,398	7,519
	TF/TS460	4,662	2,385	2,370	1,157	1,424	8	8	4,990	4,990	4,750	4,830	7,421	7,543
	TF/TS490	4,962	2,485	2,470	1,257	1,524	8	6	4,960	4,990	4,670	4,750	7,446	7,568
	TF/TS540	5,462	2,665	2,650	1,437	1,704	8	6	4,820	4,930	4,530	4,610	7,498	7,620
	TF/TS590	5,972	2,845	2,830	1,617	1,884	8	6	4,560	4,910	4,290	4,600	7,539	7,660
	TF/TS640	6,482	3,025	3,010	1,797	2,064	8	6	4,430	4,780	4,170	4,480	7,580	7,702

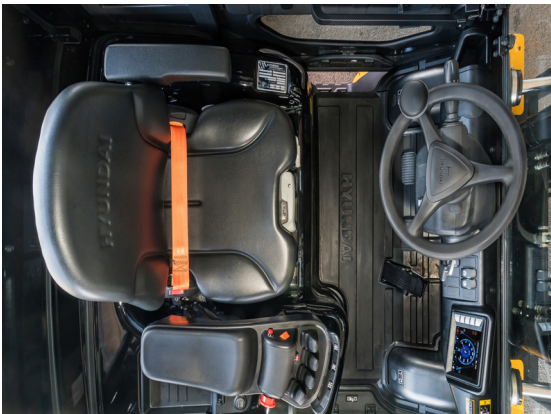
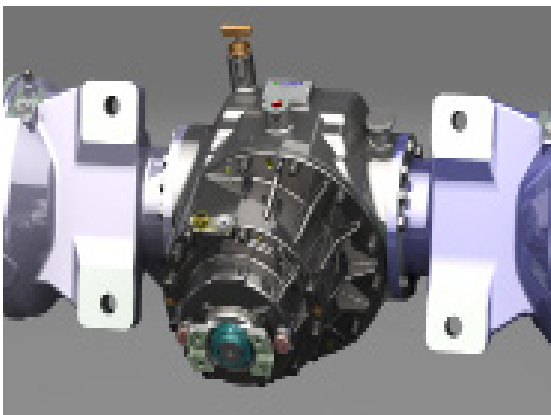
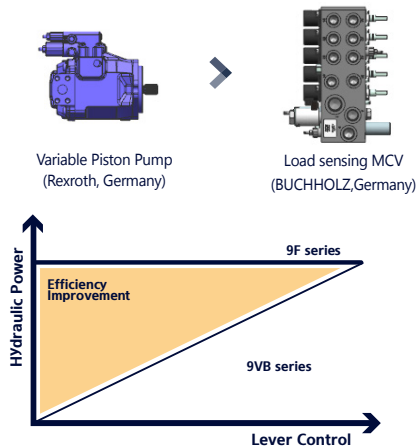
STANDARD & OPTION

	Part	Description	35D-9VB	40D-9VB	45D-9VB	50DN-9VB
OPERATION ROOM	OHG	Overhead Guard * 35D-9VB : 2,350mm / 40/45D-9VB, 50DN-9VB : 2,340mm	●	●	●	●
		Overhead guard with Rain Cover * 35D-9VB : 2,360mm / 40/45D-9VB, 50DN-9VB : 2,350mm	○	○	○	○
		Low Overhead guard with Rain Cover * 35D-9VB : 2,230mm / 40/45D-9VB, 50DN-9VB : 2,220mm	○	○	○	○
	Cabin	Cabin Options - One door, Two door	○	○	○	○
		Partial Cabin - Front glass with Wiper, Rear glass & Top Rain Cover	○	○	○	○
	A/C	Air Conditioner and/or Heater	○	○	○	○
	Seat	Full Suspension Synthetic leather Seat + Orange Belt, Seat Switch	●	●	●	●
		Additional options for Full Suspension Seat - Arm Rest, Back Rest, Belt Switch, Heat	○	○	○	○
	Lever	Lever - Manual	●	●	●	●
		Lever - Finger Tip	○	○	○	○
Ect.	Radio & USB	○	○	○	○	
	Rear Horn Grip	○	○	○	○	
MAST & ATTACHMENT	Mast	2 Stage mast - Standard(V)	●	●	●	●
		2 Stage mast - Single full free(VF)	○	○	○	○
		3 Stage mast - Single full free(TF), Dual full free(TS)	○	○	○	○
	Fork	1,220mm Fork for 35/40/45D-9VB, 1,200mm Fork for 50DN-9VB	●	●	●	●
		Fork Options - 900mm~2,300mm	○	○	○	○
	Carriage	Carriage - Narrow(1,300mm/Hook)	○	●	●	●
		Carriage options - Class IV - Wide(1,600mm/Hook)	-	-	○	○
	Attachment	Cascade Hook-on Side Shift	○	○	○	○
		Hyundai Side Shift	○	○	○	○
		Hyundai Fork Positioner - Independent	○	○	○	○
HYDRAULICS	MCV & Hoses	3 Spool MCV + attached piping for V330 mast	●	●	●	●
		MCV Options - 4 Spool (only for manual lever)	○	○	○	○
		MCV Options - 5 Spool (only for manual lever)	○	○	○	○
		Attached Piping for All MCVs & Masts	○	○	○	○
TIRE	Tires	Tire - Pneumatic(Single for 40D-9VC, 35D-9VB, Double for 45D-9VC, 50DN-9VC, 40/45D-9VB, 50DN-9VB) * Wheel rim size : Single 15", Double 16"	●	●	●	●
		Tire Options	-	-	-	-
		- Solid	○	○	○	○
		- Non Marking	○	○	○	○
		- Pneumatic Double(15" wheel rim)	○	○	○	○
VISIBILITY	Lamp	Working Lamp - Front Bulb	●	●	●	●
		Working Lamp Options - Front LED, Rear LED, Rear Bulb	○	○	○	○
		Rear Blue Spot	○	○	○	○
		LED Beacon Lamp	○	○	○	○
	Mirror	Mirror - Panorama	●	●	●	●
		Mirror Options - L/H & R/H Back Mirror, Outside Mirror	○	○	○	○
Camera	Rear view Camera only	○	○	○	○	
CONVENIENCE	-	Knob-Switch with Direction & Horn	●	●	●	●
		Auto Tilt leveling (Manual lever)	○	○	○	○
		Load Indicator	○	○	○	○
		Hydraulic Pressure on Display	●	●	●	●
SAFETY	-	OPSS - Travel & Mast	●	●	●	●
		Master Switch to cut off electricity from battery	●	●	●	●
		Hazard Switch	○	○	○	○
OTHERS	-	Plastic Side Cover	●	●	●	●
		Steel Side Cover	○	○	○	○
		Recycling Option (Under Cover & Rear tire cover)	○	○	○	○
		Fuel Cap with Key	●	●	●	●
		Hydraulic Oil - ISO VG46 (Hyundai genuine long life hydraulic oil)	●	●	●	●
		Hydraulic Oil Options - ISO VG68 for Tropical, ISO VG32 Cold Area (Hyundai genuine long life hydraulic oil) ISO VG15 Cold Area (Conventional hydraulic oil)	○	○	○	○
Accumulator - Mast damping	○	○	○	○		

● : STD / ○ : OPT

➤ PRODUCT FEATURE

9VB main hydraulic component



Productivity & Durability

- The 9VB series is equipped with an HMC 55KW diesel engine, which meets EURO Stage5 regulations on gas and achieves both environment friendly and cost saving effects due to its low fuel consumption rates.
- The TCO is dramatically reduced: A load sensing (piston pump) type hydraulic system with an optimized engine is applied.
→ Improvement of fuel efficiency and workflow : 33% and 4%, respectively.
- The power transmission capability of clutch pack is improved by 25%, T/M oil is increased by 4L, and durability under heavy load operation is expanded.
- Extended wheel base Running stability and continuous working hours are improved, and temperature increase risk during operation is reduced.

Enhanced Safety

- Auto Parking Brake: When the engine stops, the parking brake works automatically to prevent safety accidents caused by human error.
- HAC (Hill Start Assist Control): Backsliding is prevented upon restarting on a slide.
- OPSS System (simultaneously operated with Auto Parking): Driving, lifting, and tilting are restricted when the operator leaves the driver's seat.
- Password setting: Unauthorized use of forklifts is prohibited.

Outstanding Operability

- The optimized size of the engine and LS hydraulic system reduce noise and vibration to the operator.
- Reduced handle diameter and the Danfoss 4th generation Obitrol are applied to improve steering, reduce noise, and improve the reverse rotation jam.
- Deluxe suspension seat : Cushion adjustment and ELR seat belt of Grammer seats are used.
- New fingertip (OPT), which has built in Dither control and controller current feedback systems, ensures improved response time, fine tuning, and adaptability to usage temperature.

Easy Service

- Maintenance of the gas post treatment device is done with screen disassembly only, without weight removal.
- Engine diagnosis without any additional diagnostic tool and consumables replacing interval setting.
- Improved maintainability, thanks to a horizontally placed MCV with an embedded Emergency Lowering Screw.
- Waterproof and dustproof Fuse & Relay Box to prevent dust or water contamination.