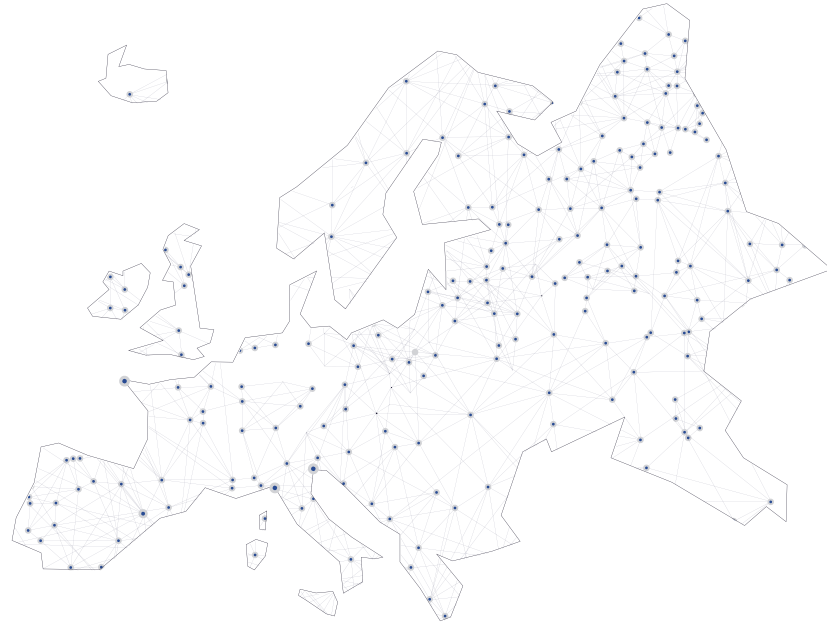
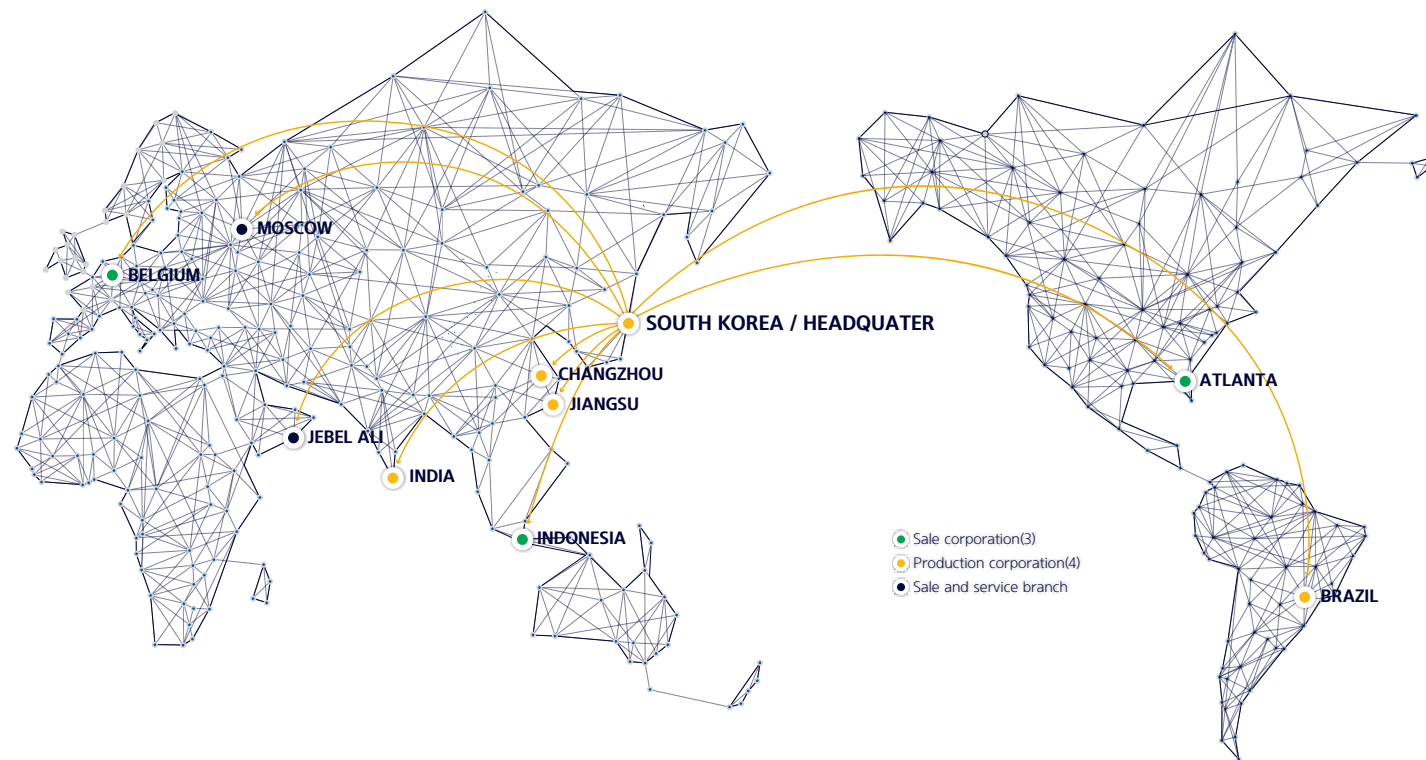


➤ EUROPE DEALER NETWORK



➤ HYUNDAI MATERIAL HANDLING GLOBAL NETWORK



BELGIUM



ATLANTA



JIANGSU



INDIA



BRAZIL



TECHNICAL SPECIFICATION

**25/30D-9V**  
**35DN-9V**

**PACKED WITH  
SMARTNESS**

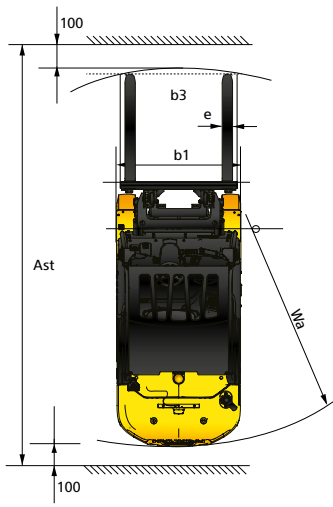
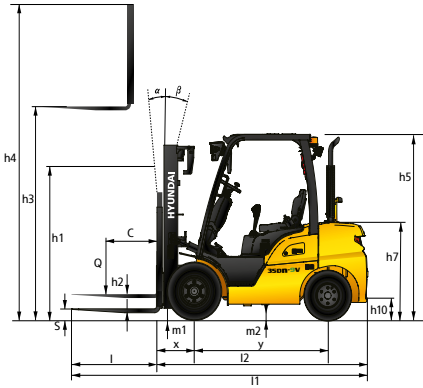
**STAGE**



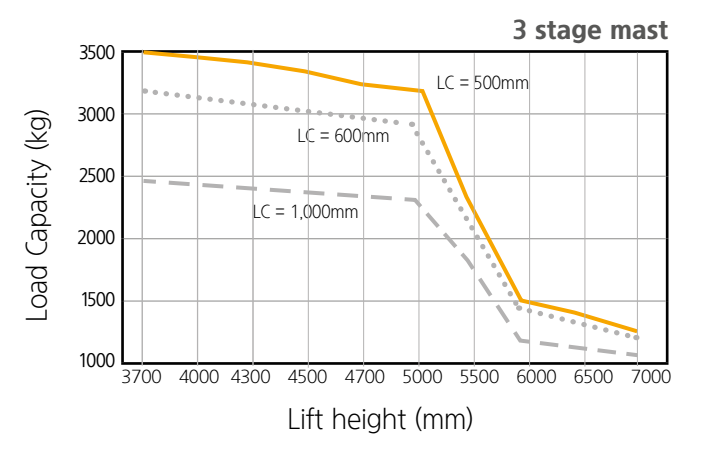
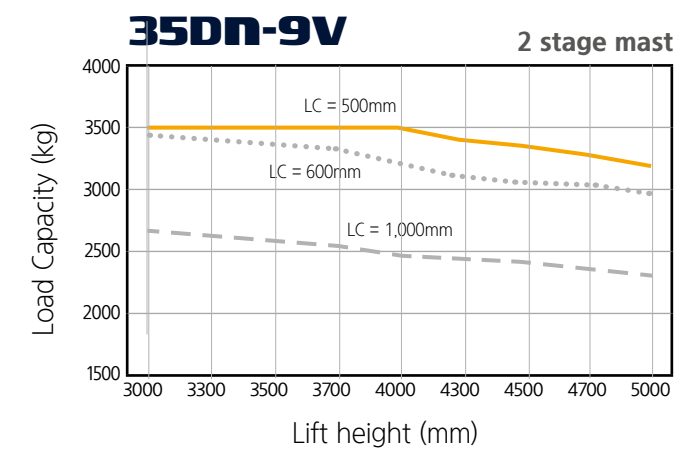
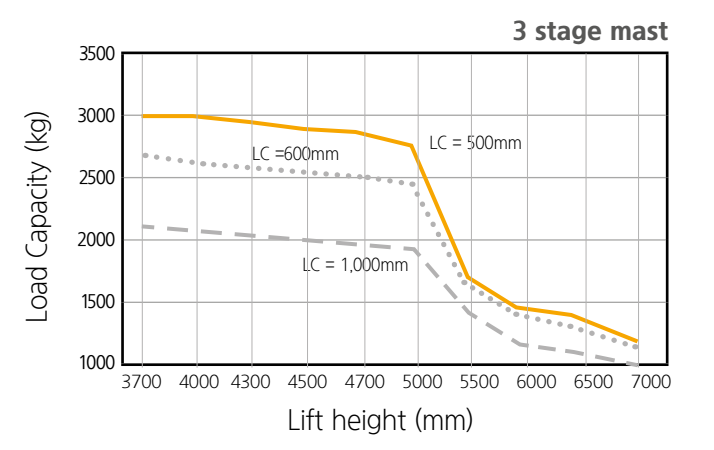
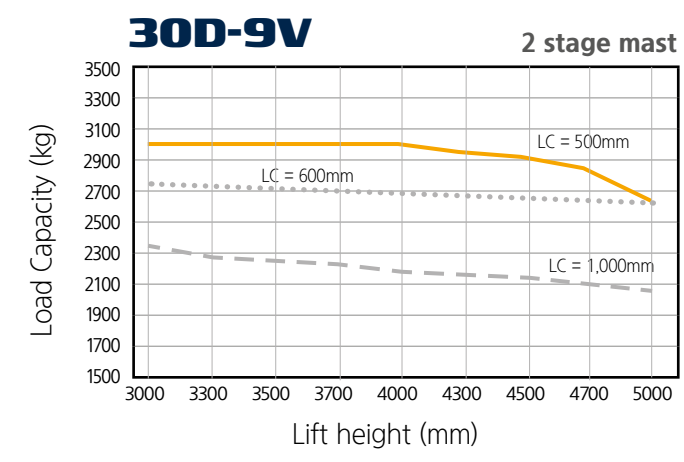
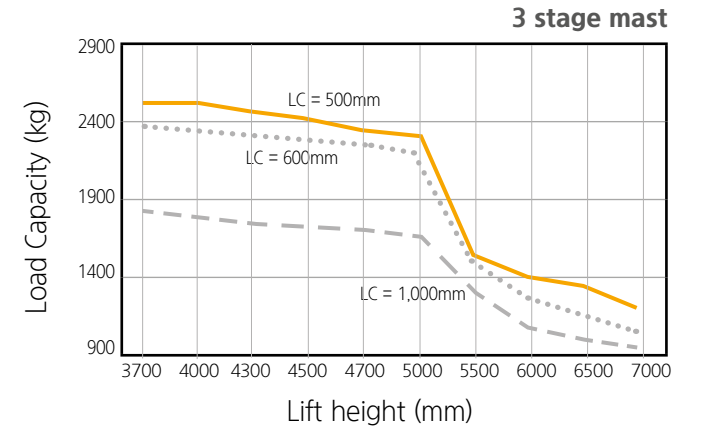
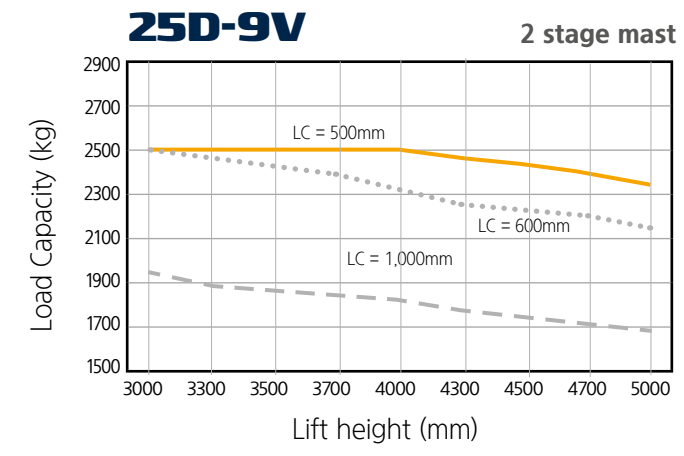
Internal Combustion Diesel Engine Forklift Truck

\* Photo may include optional equipment.

# ► SPECIFICATIONS



Distinguishing marks				Hyundai	Hyundai	Hyundai
1.1	Manufacturer			Hyundai	Hyundai	Hyundai
1.2	Manufacturer's Model Designation			25D-9V	30D-9V	35DN-9V
1.3	Drive			Diesel	Diesel	Diesel
1.4	Type Of Operation			Seated	seated	seated
1.5	Load Capacity	C	kg	2,500	3,000	3,500
1.6	Load Center Distance	x	mm	500	500	500
1.8	Load Distance(Center of Drive Axle to Fork)	y	mm	468	468	468
1.9	Wheelbase		mm	1,650	1,700	1,700
Weights						
2.1	Service Weight		kg	3,871	4,300	4,616
2.2	Axle Loading, Loaded	Front/Rear	kg	5,548 / 823	6,349 / 951	7,080 / 1,035
2.3	Axle Loading, Unloaded	Front/Rear	kg	1,581 / 2,290	1,641 / 2,659	1,588 / 3,028
Tires/Chassis						
3.1	Tires			Pneumatic	Pneumatic	Pneumatic
3.2	Tire Size	Front		7.00-12-12PR	8.15-15-14PR	8.15-15-14PR
3.3	Tire Size	Rear		6.50-10-12PR	6.50-10-12PR	6.50-10-12PR
3.5	Number of Wheels (x = Driven Wheels)	Front/Rear		2x2	2x2	2x2
3.6	Tread	Front	mm	999	1,005	1,005
3.7	Tread	Rear	mm	980	980	980
Dimensions						
4.1	Tilt of Mast/Fork Carriage Forward/Backward	$\alpha / \beta$	degree	6/10	6/10	6/10
4.2	Height, Mast Lowered	h1	mm	2,175	2,190	2,260
4.3	Free Lift	h2	mm	155	155	155
4.4	Lift Height	h3	mm	3,305	3,305	3,305
4.5	Height, Mast Extended	h4	mm	4,485	4,485	4,485
4.7	Height of	Overhead Guard	h5	2,160	2,180	2,180
		Cabin		2,170	2,190	2,190
4.8	Seat Height / Stand Height Rel. to SIP	h7	mm	1,187	1,207	1,208
4.12	Coupling Height	h10	mm	310	300	295
4.19	Overall Length	l1	mm	3,672	3,751	3,816
4.20	Length to Face of Forks	l2	mm	2,622	2,701	2,756
4.21	Overall Width	b1	mm	1,200	1,230	1,230
4.22	Fork Dimensions	l x e x s	mm	45x100x1050	45x122x1050	45x122x1050
4.23	Fork Carriage Iso 2328, Class / Type A, B			2A	3A	3A
4.24	Fork-Carriage Width	b3	mm	1102	1102	1102
4.31	Ground Clearance, Below Mast, Loaded	m1	mm	130	145	145
4.32	Ground Clearance, Center of Wheelbase	m2	mm	172	171	171
4.34.1	Aisle Width For Pallets 1000 X 1200 Crossways	Ast	mm	4,020	4,095	4,148
4.34.2	Aisle Width For Pallets 800 X 1200 Lengthways	Ast	mm	4,220	4,295	4,348
4.35	Turning Radius	Wa	mm	2,352	2,427	2,480
4.36	Smallest Pivot Point Distance		mm	714	731	731
Performance data						
5.1	Travel Speed	Loaded / Unloaded	km/h	16.4/17.7	17.2/18.8	16.9/18.8
5.2	Lift Speed	Loaded / Unloaded	mm/s	580/610	580/610	480/500
5.3	Lowering Speed	Loaded / Unloaded	mm/s	510/500	550/500	510/480
5.6	Max. Drawbar Pull	Loaded / Unloaded	N	27,399/25,957	25,777/24,257	26,016/24,162
5.8	Max. Gradeability	Loaded / Unloaded	%	42.7/21.5	34.1/20.1	30.6/17.7
5.10	Service Brake			Hydraulic	Hydraulic	Hydraulic
Engine						
7.1	Engine Manufacturer / Type			HMC D4HB	HMC D4HB	HMC D4HB
7.2	Engine Power Acc. to Iso 1585		kW/rpm (hp/rpm)	47.8/2,300 (64.1/2,300)	47.8/2,300 (64.1/2,300)	47.8/2,300 (64.1/2,300)
7.3	Maximum Torque		kgf · m / rpm	24.1/1,600	24.1/1,600	24.1/1,600
7.4	No. of Cylinders / Displacement		EA/cc	4/2199	4/2199	4/2199
7.5	Fuel Consumption Acc. to Vdi Cycle		l/h	2.7	3	3.2
Additional						
8.1	Type of Drive Control	AC		Power Shift	Power Shift	Power Shift
8.2	Operating Pressure, System / Attachments	bar		200/140	200/140	200/140
8.3	Oil Volume For Attachments	LPM		55	55	55
8.5	Trailer Coupling, Type Din			PIN	PIN	PIN



\* The above specifications are based on V300 mast.  
 \* In accordance with guideline 2198, this specification sheet provides details of the standard truck only. Non-standard tires, different masts, optional equipment, etc. may result in different values.

\* The above specifications are based on standard carriage and forks





## STANDARD & OPTION

	Part	Description	25D-9V	30D-9V	35DN-9V
OPERATION ROOM	OHG	Overhead Guard *25D-9V : 2,160mm, 30D-9V & 35DN-9V : 2,180mm	●	●	●
		Overhead guard with Rain Cover *25D-9V : 2,170mm, 30D-9V & 35DN-9V : 2,190mm	○	○	○
	Cabin	Cabin Options - One door, Two door	○	○	○
		Partial Cabin - Front glass with Wiper, Rear glass & Top Rain Cover	○	○	○
	A/C	Air Conditioner and / or Heater	○	○	○
	Seat	Full Suspension Synthetic leather Seat + Orange Belt, Arm Rest, Seat Switch	●	●	●
		Seat Accessories - Long Back Rest,Belt Switch, Heated Seat	○	○	○
	Lever	Lever - General	●	●	●
		Lever - Finger Tip	○	○	○
	Ect.	Radio & USB	○	○	○
Rear Horn Grip		●	●	●	
MAST & ATTACHMENT	Mast	2 Stage mast - Standard(V)	●	●	●
		2 Stage mast - Single full free(VF)	○	○	○
		3 Stage mast - Single full free(TF), Dual full free(TS)	○	○	○
	Fork	1,200mm Fork	●	●	●
		Fork Options - 900mm~2,300mm	○	○	○
	Carriage	Carriage - Narrow(1,102mm/Hook)	●	●	●
		Carriage Options	-	-	-
	Attachment	- Wide(1,442mm/Hook)	○	○	○
		Hook-on Side Shift	○	○	○
		Integrated Side-Shift Side-Shift & Fork Positioner	○	○	○
HYDRAULICS	MCV & Hoses	3 Spool MCV + attached piping for V330 mast	●	●	●
		MCV Options - 4 Spool	○	○	○
		Attached Piping for All MCVs & Masts	○	○	○
		Brake - General type	●	●	●
TIRE	Tires	Tire - Pneumatic(Single)	●	●	●
		Tire Options	-	-	-
		- Solid	○	○	○
		- Non Marking	○	○	○
		- Pneumatic Double or Solid Double tire (15" wheel rim)	○	○	○
VISIBILITY	Lamp	Working Lamp - Front Bulb	●	●	●
		Working Lamp Options - Front LED, Rear LED	○	○	○
		Rear Blue Spot	○	○	○
	Mirror	LED Beacon Lamp	○	○	○
		Mirror - Panorama	●	●	●
Camera	Mirror Options - L/H & R/H Back Mirror, Outside Mirror	○	○	○	
	Rear View Camera only	○	○	○	
CONVENIENCE	-	Front & Rear View Camera	○	○	○
		Knob-Switch with Direction & Horn	●	●	●
		Auto Tilt Leveling	○	○	○
		Load Indicator	○	○	○
SAFETY	-	Hydraulic Pressure Indication On Display	●	●	●
		OPSS - Travel & Mast	●	●	●
		Master Switch to cut-off electricity from battery	●	●	●
OTHERS	-	Hazard Switch	○	○	○
		Steel Side Cover	○	○	○
		Plastic Side Cover	●	●	●
		Recycling Option (Rear Tire Cover + Under Cover)	○	○	○
		Fuel Cap with Key	○	○	○
		Pre-cleaner	○	○	○
		Hyd. Oil-VG46	●	●	●
Hyd. Oil Options - VG68 for Tropical, VG15 & VG32 for Cold Area	○	○	○		
Accumulator - Mast damping	○	○	○		

● : STD / ○ : OPT

## PRODUCT FEATURE



### Productivity & Durability

- An HMC D4HB 47.8kW diesel engine which meets EU Stage 5 regulations. Depending on the working conditions, the operator can select the engine power between power mode and standard mode.
- New HYUNDAI CORE MOTION transmission, electronic proportional controlled by transmission control unit TCU.
- The drive-off performance and the creep-speed can be adjusted by the cluster. And an electronic inching system improves fine controllability.
- Regardless of the weight or temperature fluctuation of T/M oil, the starting and driving characteristics remain the same.
- New HYUNDAI CORE MOTION drive-axle with an increased volume of drive-axle oil in order to increase durability & life span of the wet disk brake system.

### Enhanced Safety

- Auto Parking Brake : Automatically applied when engine is switched off.
- HAC (Hill Start Assist Control) : Activates the parking brake when stopping on a slope and prevents rolling backwards during drive-off.
- OPSS (simultaneously operated with Auto Parking) : Driving, lifting, and tilting are restricted when the operator leaves the driver's seat.
- Seat belt Interlock System : Driver needs to wear the seat-belt in order to work with the machine. (OPT)
- Machine access password: A password needs to be entered to prevent unauthorized use of the forklift.

### Outstanding Operability

- A reduced steering-wheel diameter in combination with the new Danfoss orbitrol offer the driver a perfect machine handling.
- The Grammer seat stands for a high quality seat with a wider seat cushion and ELR seat belt.
- The new cluster with improved design and features. MCU (Machine Control Unit) is integrated in the cluster, less wiring and less components for increased durability.
- New Fingertip system with new MCV (by Buchholz), ensures improved response time, feeling and extended fine-tuning possibilities. (OPT)

### Easy Service

- Maintenance or replacement of the DPF device is possible without counterweight removal.
- Extended on-board diagnostics and monitoring (eg. DPF regeneration progress) through the cluster.
- Water and dustproof fuse & relay box